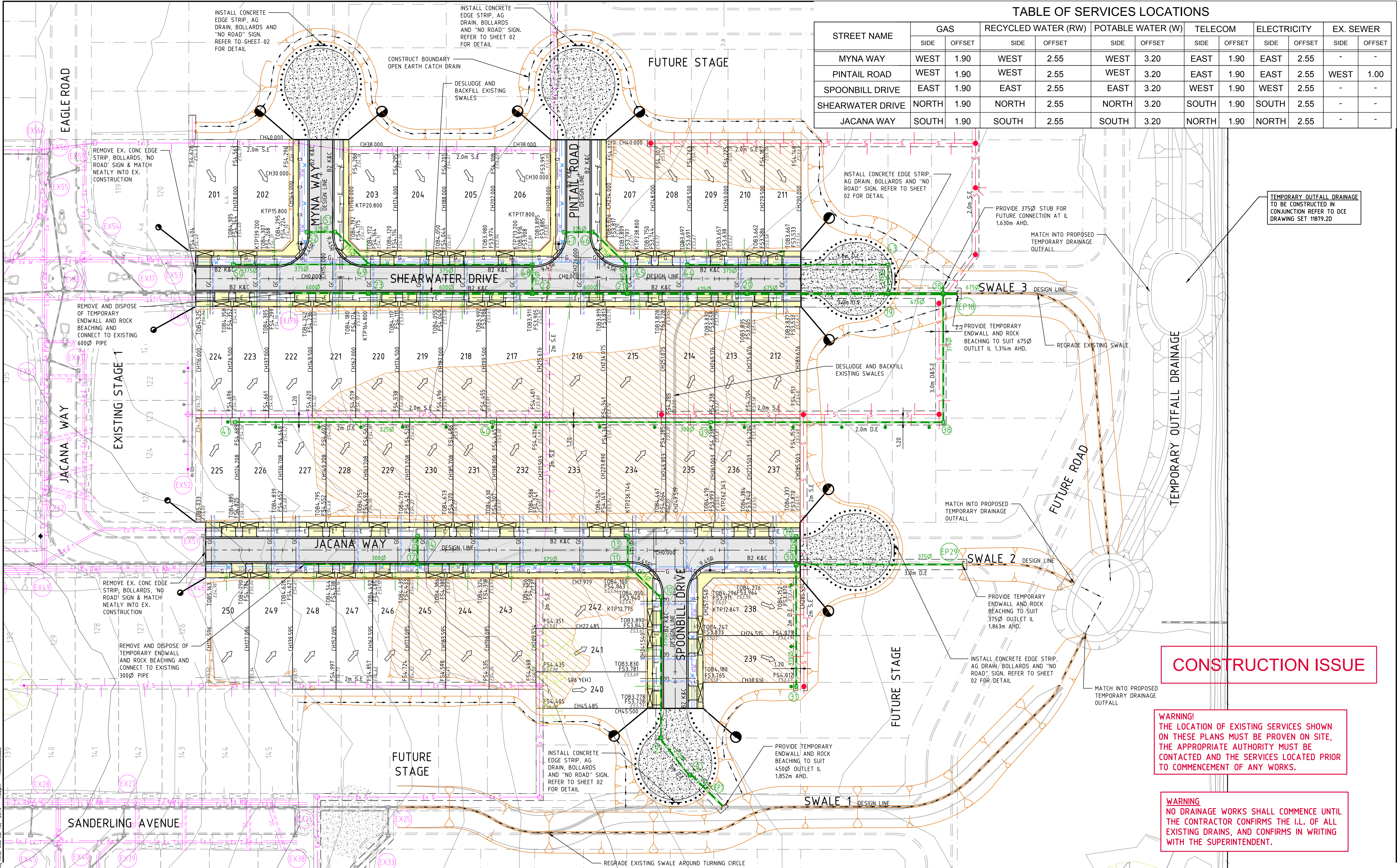


TABLE OF SERVICES LOCATIONS

STREET NAME	GAS		RECYCLED WATER (RW)		POTABLE WATER (W)		TELECOM		ELECTRICITY		EX. SEWER	
	SIDE	OFFSET	SIDE	OFFSET	SIDE	OFFSET	SIDE	OFFSET	SIDE	OFFSET	SIDE	OFFSET
MYNA WAY	WEST	1.90	WEST	2.55	WEST	3.20	EAST	1.90	EAST	2.55	-	-
PINTAIL ROAD	WEST	1.90	WEST	2.55	WEST	3.20	EAST	1.90	EAST	2.55	WEST	1.00
SPOONBILL DRIVE	EAST	1.90	EAST	2.55	EAST	3.20	WEST	1.90	WEST	2.55	-	-
SHEARWATER DRIVE	NORTH	1.90	NORTH	2.55	NORTH	3.20	SOUTH	1.90	SOUTH	2.55	-	-
JACANA WAY	SOUTH	1.90	SOUTH	2.55	SOUTH	3.20	NORTH	1.90	NORTH	2.55	-	-



**CONSTRUCTION ISSUE**

**WARNING!**  
THE LOCATION OF EXISTING SERVICES SHOWN ON THESE PLANS MUST BE PROVEN ON SITE, THE APPROPRIATE AUTHORITY MUST BE CONTACTED AND THE SERVICES LOCATED PRIOR TO COMMENCEMENT OF ANY WORKS.

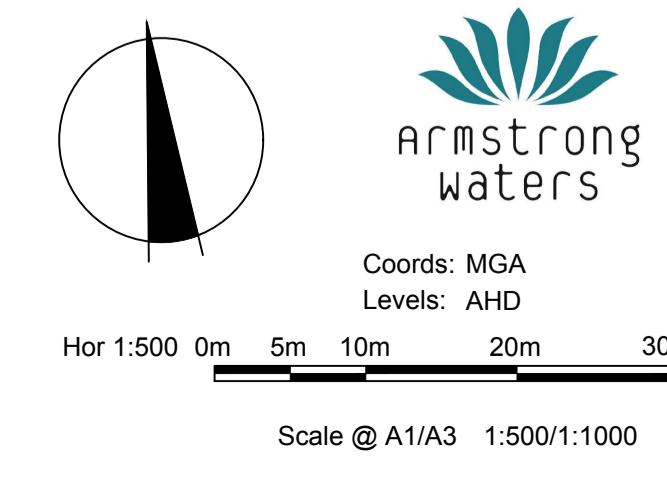
**WARNING**  
NO DRAINAGE WORKS SHALL COMMENCE UNTIL THE CONTRACTOR CONFIRMS THE I.L. OF ALL EXISTING DRAINS, AND CONFIRMS IN WRITING WITH THE SUPERINTENDENT.

Drawing File: G:\Design\11879.2-Armstrong Waters Stage 2\11879.2DPO1.dwg - 11879.2DPO1.dwg  
Date/Time: Wed Jul 13, 2016 - 11:32am - rebecca.saber

REV	AMENDMENTS	DATE	APP'D.
3	AMENDED PAVEMENT DESIGN	13/07/16	TL
2	FUTURE DRIVEWAY ADDED	06/07/16	TL
1	AMENDED OUTFALL SWALES AND PAVEMENT DESIGN	16/05/16	TL
0	CONSTRUCTION ISSUE	03/05/16	TL

Drawn R.SABER  
Date 15/02/2016  
AN 1481091  
Designed R.SABER  
Date 15/01/16  
AN 1481095  
Verified P.MILLER  
Date 16/02/16  
AN 581370  
Audited R.MASON  
Date 29/04/16  
AN 703584  
Approved T.LIAKOPOULOS  
Date 03/05/16  
AN 885590

- LEGEND**
- Ex W - EXISTING WATER MAIN
  - Ex G - EXISTING GAS MAIN
  - Ex E - EXISTING ELECTRICAL CABLE
  - Ex S - EXISTING SEWER MAIN & MANHOLE
  - Ex T - EXISTING TELECOMM. CABLE AND PIT
  - Ex P - EXISTING ELEC. POLE & O'HEAD LINES
  - Ex D - EXISTING STORMWATER DRAIN & PIT
  - Ex C - CONSTRUCTED PRE DEVELOPMENT
  - X - EXISTING TREES TO BE REMOVED
  - FS20.06 - EXISTING SURFACE LEVEL
  - FS21.650 - FINISHED SURFACE LEVEL
  - O.E.D. - OPEN EARTH DRAIN (O.E.D.)
  - S - SEWER MAIN AND MANHOLE
  - G - STORMWATER DRAIN & PIT
  - SW - SW DRAIN & PIT CONSTRUCTED IN PREVIOUS STAGES
  - P - PROPERTY INLETS
  - H - HOUSE DRAIN
  - GC - GAS CONDUIT
  - W - WATER CONDUIT
  - RW - RECYCLED WATER CONDUIT
  - TC - TELECOMM. CONDUIT
  - PSM - PERMANENT SURVEY MARK
  - TBM - TEMPORARY BENCH MARK
  - W - WATER
  - RW - RECYCLED WATER
  - T - TELECOMMUNICATIONS
  - E - ELECTRICITY
  - G - GAS
  - S - STREET NAME SIGN
  - R - REGRADE LOT AT MIN 1 IN 150 ASPHALT PAVEMENT
  - P - CONC FOOTPATH / DRIVEWAY
  - L - LANDSCAPING
  - F - FILLING OVER 300mm
  - S - FINISHED SURFACE CONTOUR



**LAUREL GROVES ESTATES PTY LTD**  
**ARMSTRONG WATERS - STAGE 2**  
 291-411 CHARLEMONT ROAD, CONNEWARRE  
**DETAIL PLAN**

**armstrong waters**

Coords: MGA  
Levels: AHD

**Drawing No. 11879.2DPO1 Rev 3**  
 Sheet No. 04 **CONSTRUCTION ISSUE**  
 © Dalton Consulting Engineers Pty Ltd

**DALTON CONSULTING ENGINEERS**

ABN 78 429 221 049  
 QUEENSLAND  
 T 61 7 3374 9000  
 E info@dceng.com.au

VICTORIA  
 T 61 3 9813 7400  
 W dceng.com.au

Written dimensions to take precedence over scale. Contractor shall check and verify all dimensions on site. Discrepancies to be brought to the attention of the Superintendent.